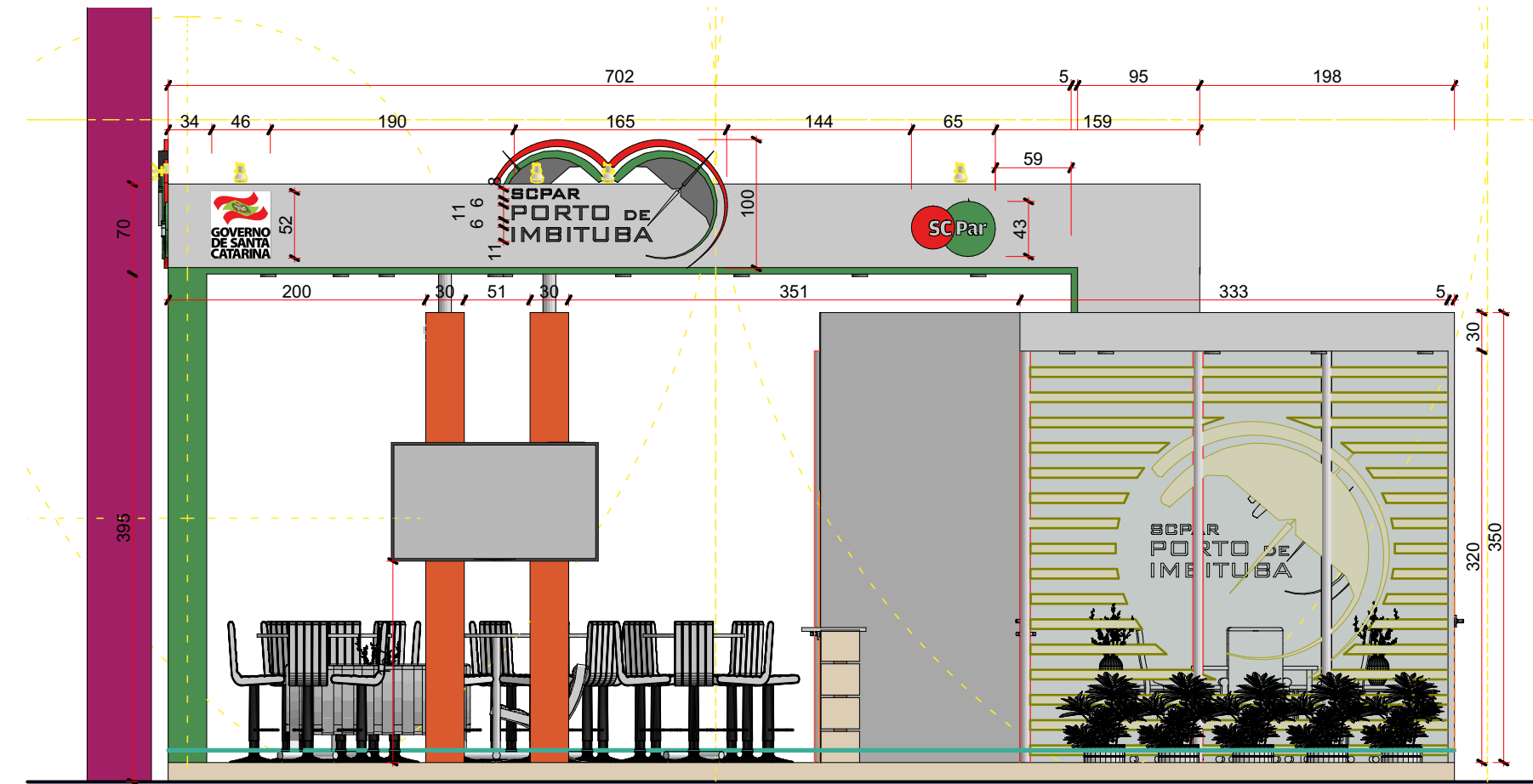
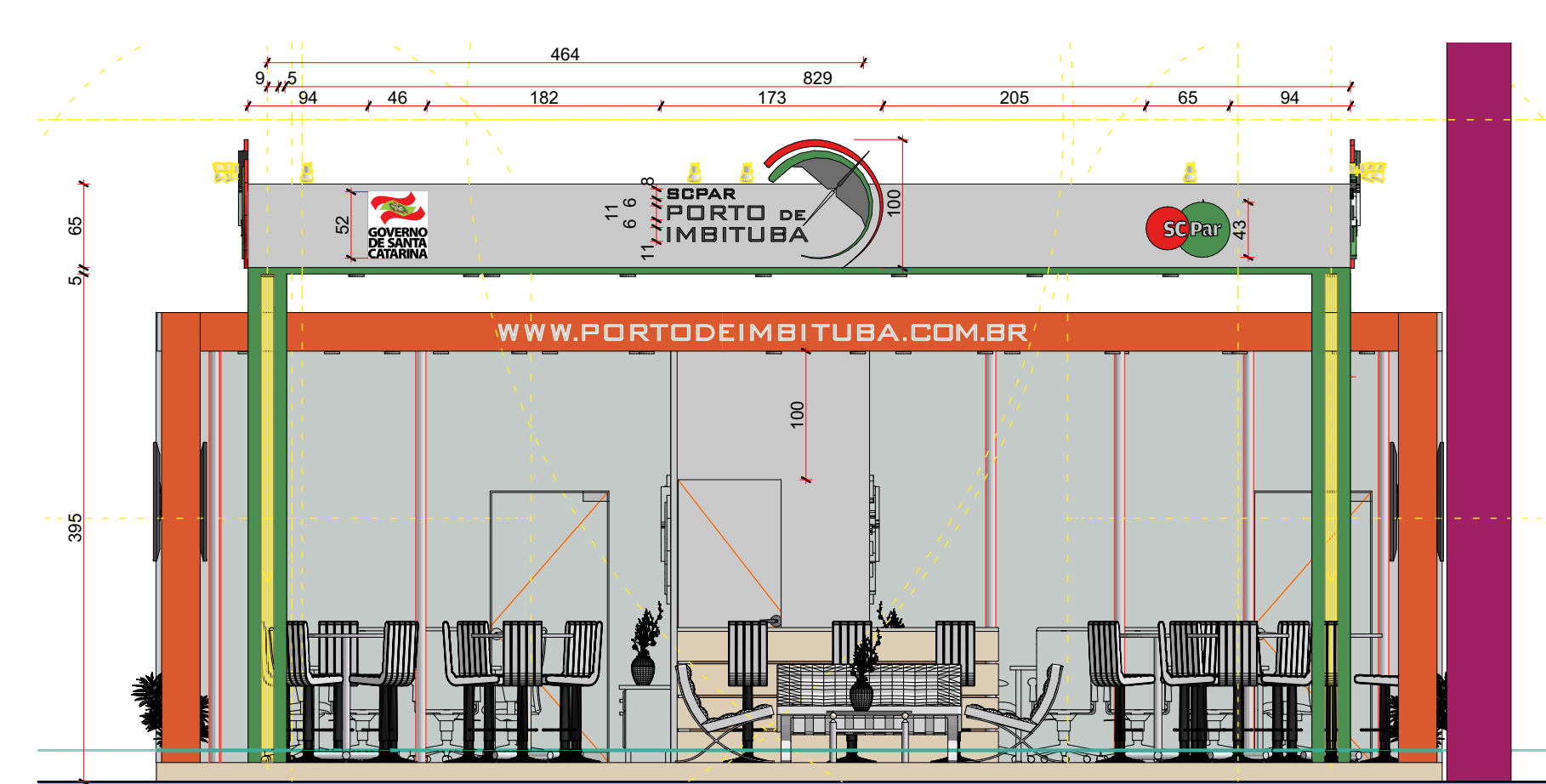


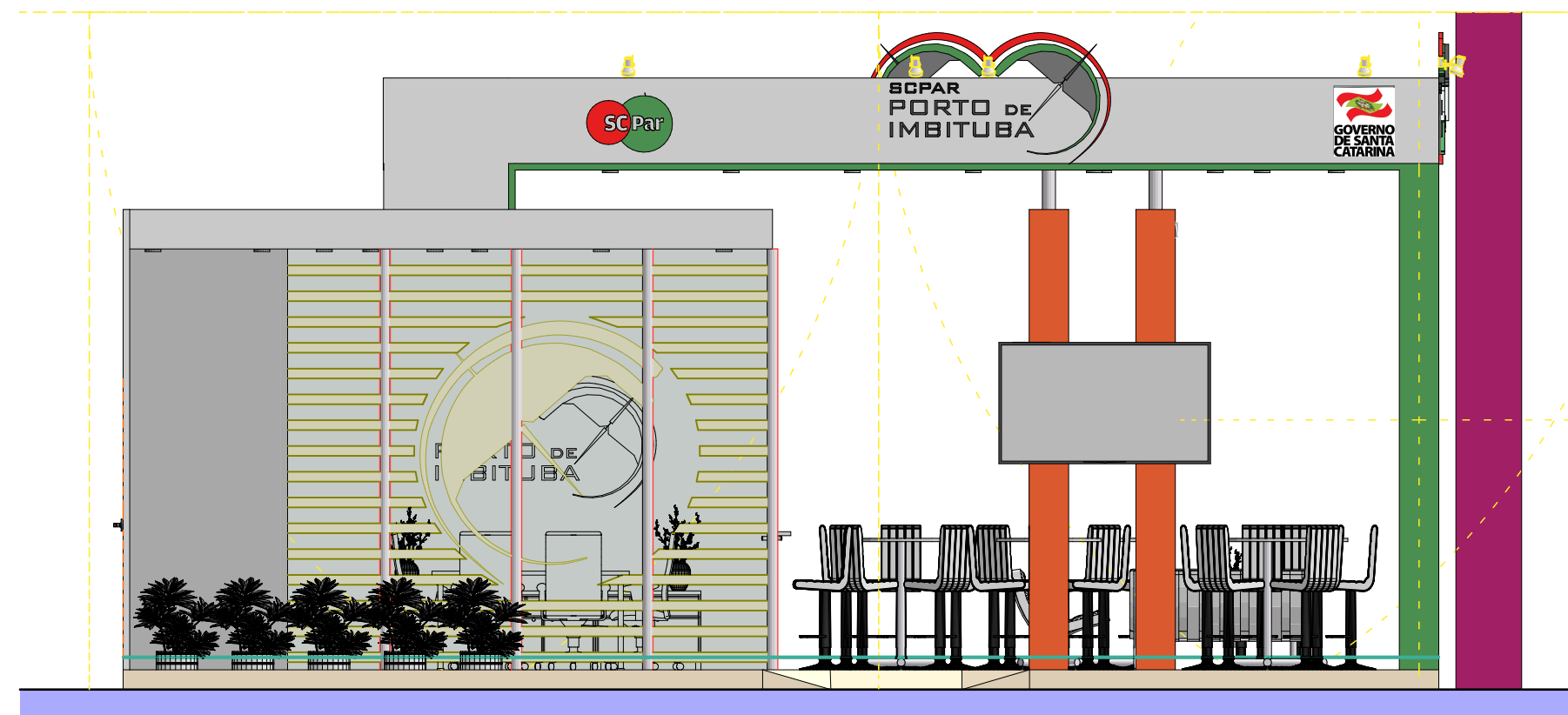
0. Planta Baixa Térrea 1:50



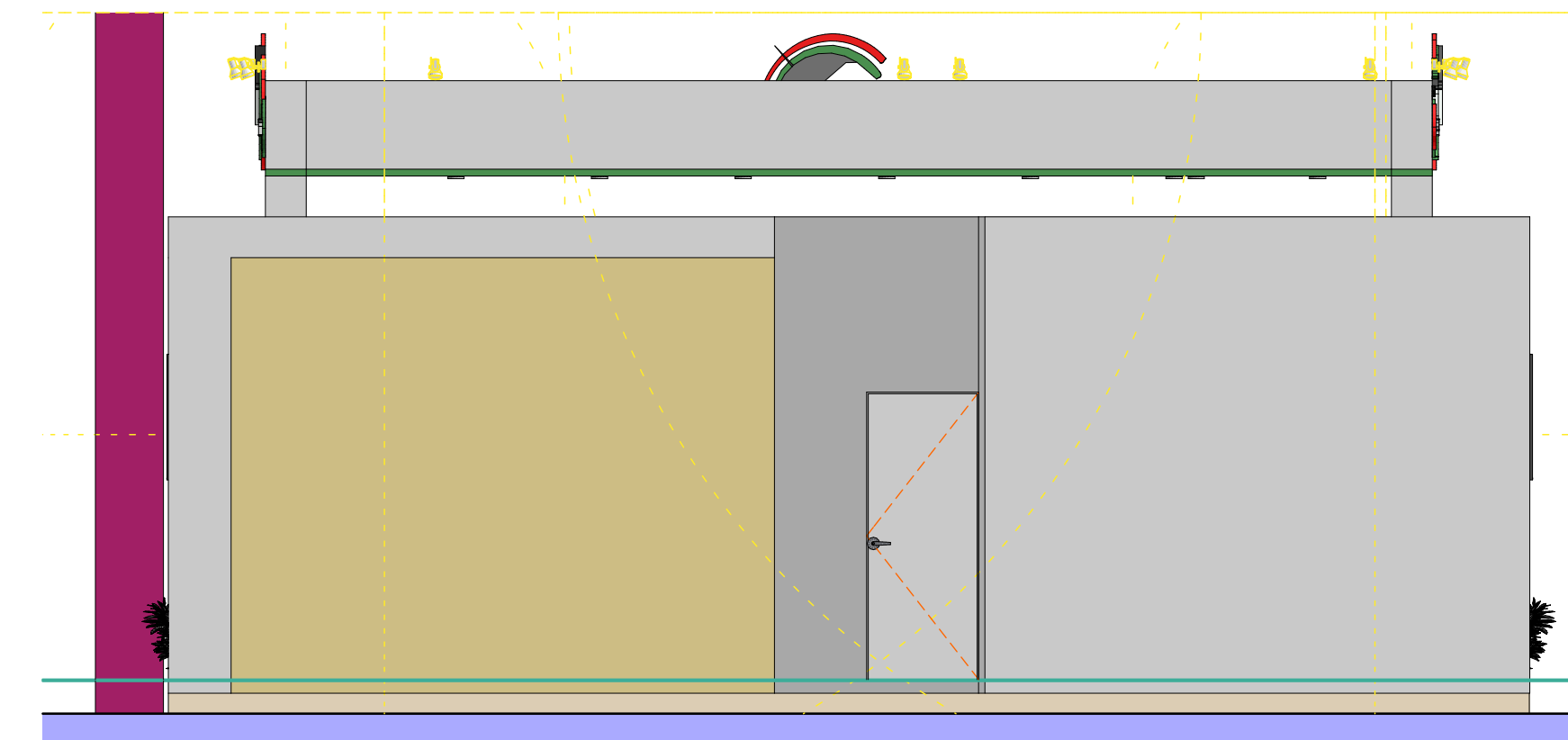
Fachada Lateral Direita 1:50



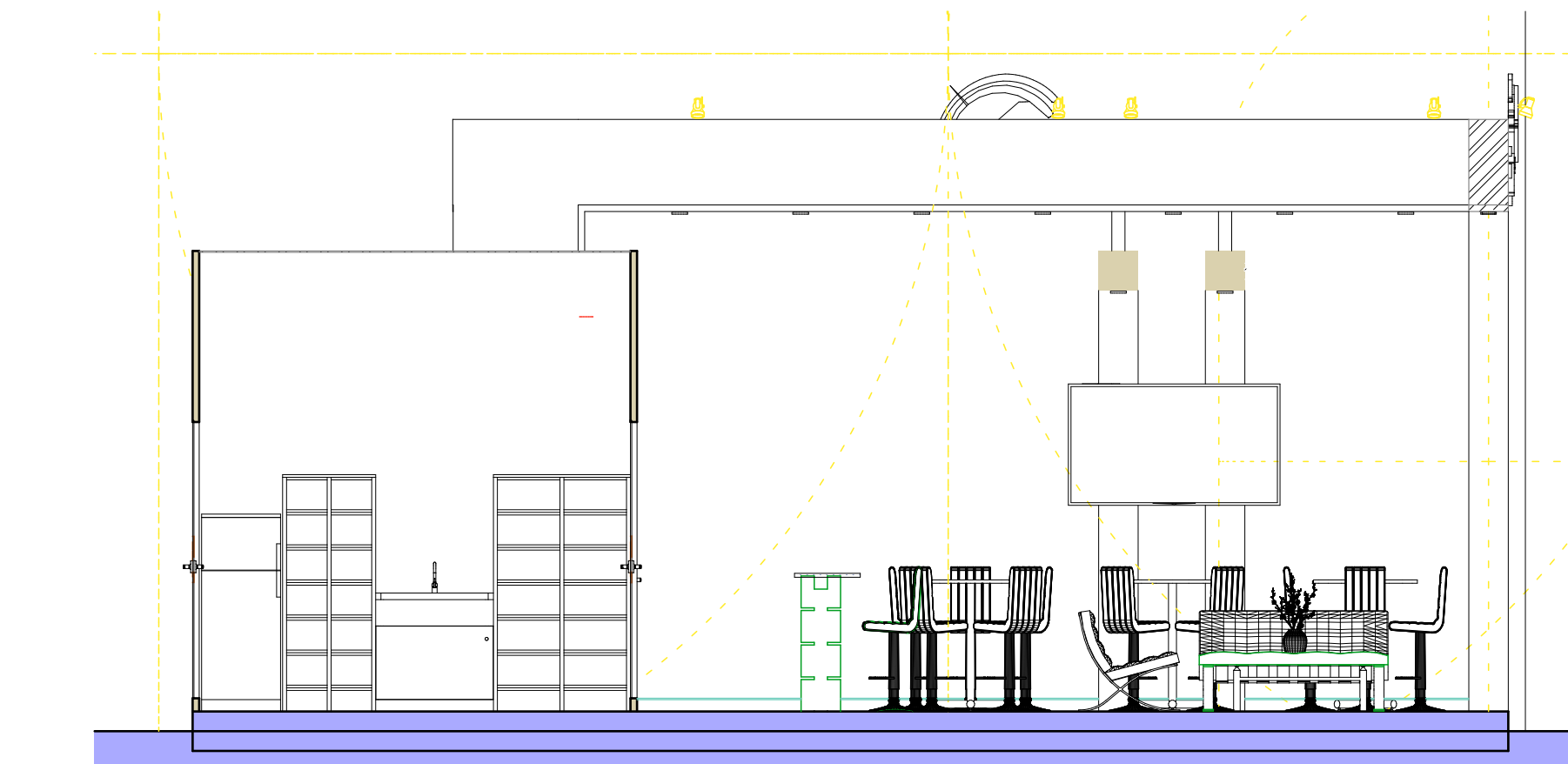
Fachada Frontal 1:50



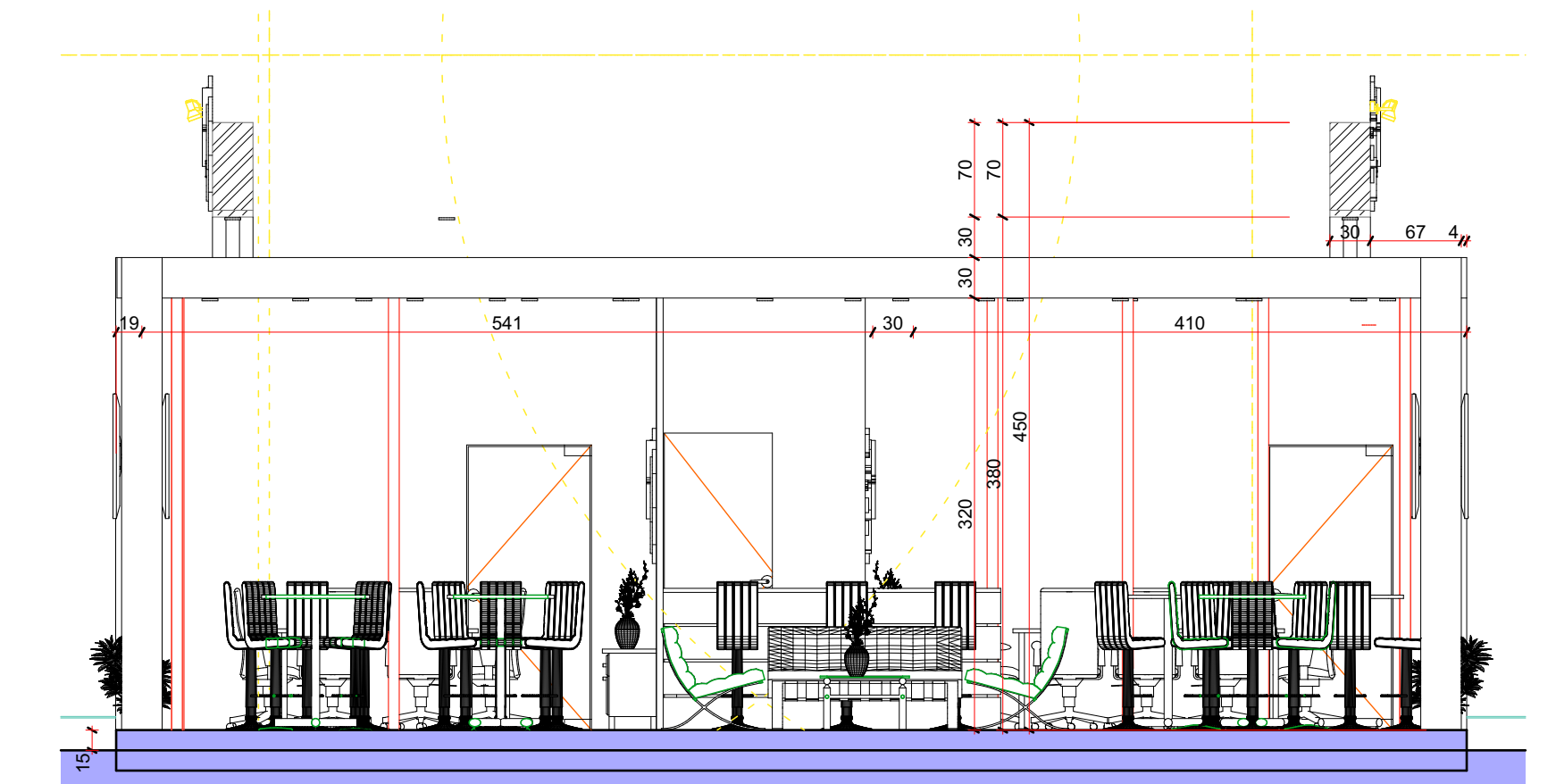
Fachada Lateral Esquerda 1:50



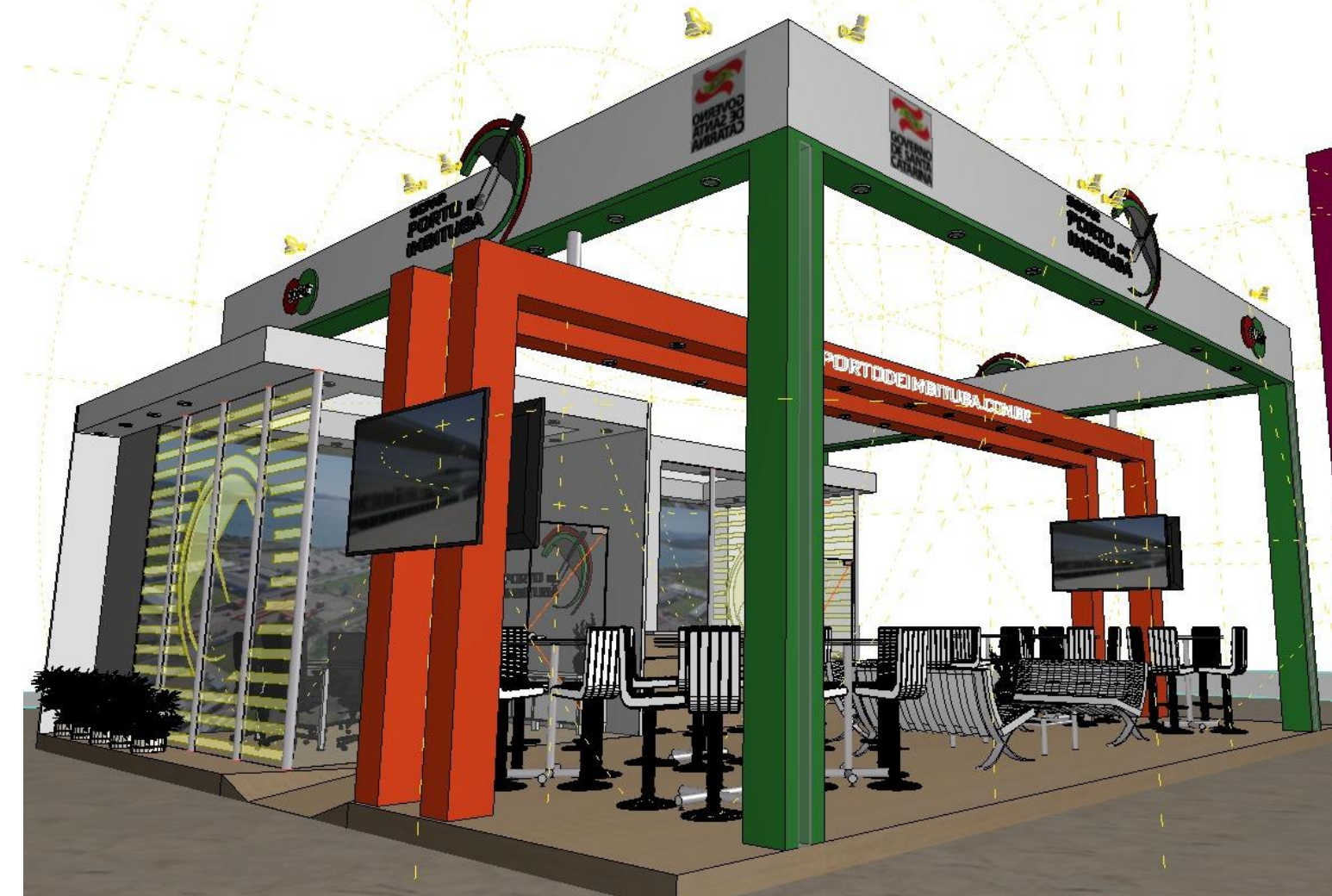
Fachada Fundos 1:50



Corte BB 1:50



Corte AA 1:50



  	
Stand da SCPAR - Porto de Imbituba na Feira INTERMODAL 2019	
<small>TÍTULO: Stand da SCPAR - Porto de Imbituba na Feira INTERMODAL 2019</small>	
<small>RESPONSÁVEL TÉCNICO: Arq. Daniel Dobrachinsky Plentz</small>	
<small>GERENTE DE OBRAS E INFRAESTRUTURA: Eng. Mairo Puccini Serralha</small>	
<small>CLIENTE: SC PAR - PORTO DE IMBITUBA S.A. - Rua Presidente Vargas, 100 - Imbituba/SC</small>	
<small>ASSUNTO: Plantas Baixas, Cortes, Fachadas e Perspectivas</small>	
<small>FOLHA: 1/2</small>	
<small>ÁREA: 100 m²</small>	
<small>ESCALA: Indicada</small>	
<small>DATA: 15/01/2019</small>	